



# EXPERIENCE NATURE IN LUXURY: DISCOVER COUNTRY GLAMPING ON THE RIVER

At Country Glamping on the River, we redefine the traditional camping experience by combining the beauty of nature with the comforts of home, nestled in the scenic heart of the country along the beautiful Tennessee River. Our lots and glamping sites offer spacious, stylish Safari, Bell, WallTents / Yurts/ DomeHomes/ A-Frames/ TinyHomes/ Container Homes /RV's/ Campers/ Trailers/ TinyCabins /LogCabins/Bunkers & more, all equipped with comfortable beds, cozy furnishings, and panoramic panoramic views of the river.

Let us help you design your perfect glamping oasis. Consider securing your lot or lots now to take advantage of our discounted pre-sale pricing. Options Available: "Turn Key" packages for Design and Monetization; provided by: [WWW.COUNTRYGLAMPINGUSA.COM](http://WWW.COUNTRYGLAMPINGUSA.COM)

✉ [JAMIE@COUNTRYGLAMPINGONThERIVER.COM](mailto:JAMIE@COUNTRYGLAMPINGONThERIVER.COM)

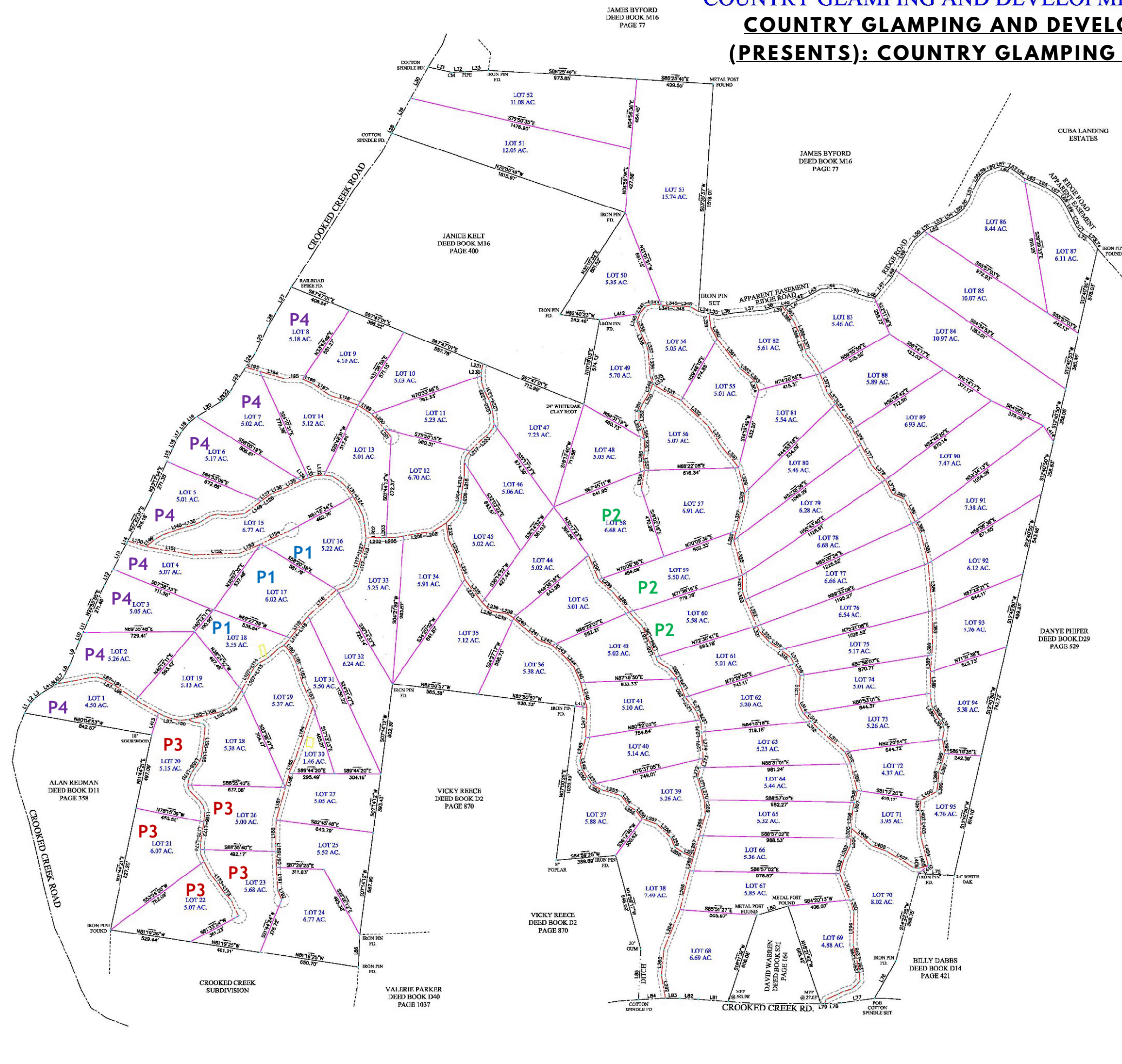
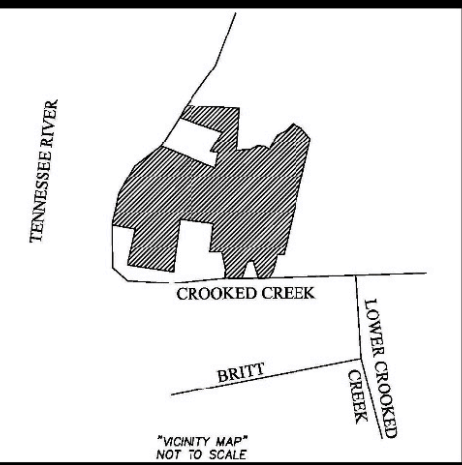
☎ (727) 496-7673 C/O JAMIE MAVEAUX **CEO**



Learn More About Our Vision

[WWW.COUNTRYGLAMPINGONThERIVER.COM](http://WWW.COUNTRYGLAMPINGONThERIVER.COM)

# COUNTRY GLAMPING AND DEVELOPMENT, LLC (PRESENTS): COUNTRY GLAMPING ON THE RIVER



| Type      | Pre-Sale Pricing/Acre |
|-----------|-----------------------|
| Standard  | \$12,000.00           |
| Premium 1 | \$20,000.00           |
| Premium 2 | \$18,000.00           |
| Premium 3 | \$15,000.00           |
| Premium 4 | \$25,000.00           |

| LINE | LENGTH | BEARING     | LINE | LENGTH | BEARING     | LINE   | LENGTH | BEARING     | LINE | LENGTH | BEARING     |
|------|--------|-------------|------|--------|-------------|--------|--------|-------------|------|--------|-------------|
| L1   | 78.98  | N89°00'00"W | L101 | 86.81  | N29°00'00"W | L190   | 89.73  | N44°00'00"W | L279 | 48.98  | N43°41'00"W |
| L2   | 45.20  | N89°00'00"W | L102 | 25.89  | N87°00'00"W | L191   | 20.45  | N87°00'00"W | L280 | 73.57  | N43°41'00"W |
| L3   | 53.98  | N89°00'00"W | L103 | 48.79  | N31°41'00"W | L192   | 83.86  | N88°30'00"W | L281 | 68.25  | N43°00'00"W |
| L4   | 28.20  | N89°00'00"W | L104 | 28.20  | N44°00'00"W | L193   | 17.41  | N86°45'00"W | L282 | 108.65 | N84°00'00"W |
| L5   | 65.00  | N89°00'00"W | L105 | 65.00  | N89°00'00"W | L194   | 15.21  | N87°44'00"W | L283 | 88.54  | N89°00'00"W |
| L6   | 15.01  | N89°00'00"W | L106 | 11.11  | N94°00'00"W | L195   | 12.14  | N89°00'00"W | L284 | 47.27  | N89°00'00"W |
| L7   | 55.50  | N89°00'00"W | L107 | 77.82  | N4°00'00"W  | L196   | 92.75  | N89°00'00"W | L285 | 82.56  | N89°00'00"W |
| L8   | 88.75  | N89°00'00"W | L108 | 41.26  | N52°00'00"W | L197   | 59.38  | N89°00'00"W | L286 | 10.75  | N89°00'00"W |
| L9   | 156.50 | N89°00'00"W | L109 | 68.52  | N89°00'00"W | L198   | 23.99  | N89°00'00"W | L287 | 99.58  | N89°00'00"W |
| L10  | 65.00  | N89°00'00"W | L110 | 25.89  | N87°00'00"W | L199   | 20.45  | N87°00'00"W | L288 | 73.57  | N43°41'00"W |
| L11  | 71.27  | N89°00'00"W | L111 | 23.24  | N45°00'00"W | L200   | 32.02  | N89°00'00"W | L289 | 136.25 | N89°00'00"W |
| L12  | 101.53 | N89°00'00"W | L112 | 63.89  | N89°00'00"W | L201   | 14.62  | N89°00'00"W | L290 | 56.67  | N89°00'00"W |
| L13  | 196.60 | N89°00'00"W | L113 | 53.07  | N89°00'00"W | L202   | 48.11  | N47°00'00"W | L291 | 89.20  | N89°00'00"W |
| L14  | 182.53 | N89°00'00"W | L114 | 21.00  | N44°00'00"W | L203   | 48.26  | N89°00'00"W | L292 | 144.66 | N89°00'00"W |
| L15  | 52.56  | N89°00'00"W | L115 | 41.00  | N89°00'00"W | L204   | 30.26  | N89°00'00"W | L293 | 63.53  | N89°00'00"W |
| L16  | 61.10  | N89°00'00"W | L116 | 55.85  | N17°00'00"W | L205   | 39.24  | N89°00'00"W | L294 | 200.54 | N89°00'00"W |
| L17  | 70.68  | N89°00'00"W | L117 | 165.79 | N89°00'00"W | L206   | 68.26  | N89°00'00"W | L295 | 61.67  | N89°00'00"W |
| L18  | 69.57  | N89°00'00"W | L118 | 39.46  | N74°00'00"W | L207   | 63.52  | N89°00'00"W | L296 | 178.11 | N44°00'00"W |
| L19  | 87.31  | N89°00'00"W | L119 | 96.87  | N89°00'00"W | L208   | 78.81  | N89°00'00"W | L297 | 183.28 | N89°00'00"W |
| L20  | 192.74 | N89°00'00"W | L120 | 33.99  | N14°00'00"W | L209   | 38.19  | N89°00'00"W | L298 | 163.56 | N89°00'00"W |
| L21  | 38.23  | N45°00'00"W | L121 | 87.71  | N89°00'00"W | L210   | 41.85  | N89°00'00"W | L299 | 248.26 | N46°00'00"W |
| L22  | 191.43 | N89°00'00"W | L122 | 74.71  | N54°00'00"W | L211   | 47.65  | N89°00'00"W | L300 | 18.79  | N89°00'00"W |
| L23  | 114.74 | N89°00'00"W | L123 | 62.83  | N49°00'00"W | L212   | 104.29 | N89°00'00"W | L301 | 30.23  | N89°00'00"W |
| L24  | 195.92 | N89°00'00"W | L124 | 68.27  | N57°00'00"W | L213   | 137.48 | N89°00'00"W | L302 | 87.60  | N89°00'00"W |
| L25  | 160.48 | N89°00'00"W | L125 | 53.50  | N89°00'00"W | L214   | 132.39 | N89°00'00"W | L303 | 46.63  | N47°00'00"W |
| L26  | 158.84 | N89°00'00"W | L126 | 61.63  | N89°00'00"W | L215   | 109.35 | N89°00'00"W | L304 | 36.39  | N89°00'00"W |
| L27  | 49.63  | N89°00'00"W | L127 | 43.94  | N59°00'00"W | L216   | 78.10  | N43°00'00"W | L305 | 83.48  | N89°00'00"W |
| L28  | 216.25 | N89°00'00"W | L128 | 50.00  | N59°00'00"W | L217   | 44.46  | N70°00'00"W | L306 | 134.02 | N89°00'00"W |
| L29  | 192.74 | N89°00'00"W | L129 | 33.99  | N14°00'00"W | L218   | 38.19  | N89°00'00"W | L307 | 163.56 | N89°00'00"W |
| L30  | 38.23  | N45°00'00"W | L130 | 87.71  | N89°00'00"W | L219   | 41.85  | N89°00'00"W | L308 | 178.11 | N44°00'00"W |
| L31  | 191.43 | N89°00'00"W | L131 | 74.71  | N54°00'00"W | L220   | 47.65  | N89°00'00"W | L309 | 183.28 | N89°00'00"W |
| L32  | 114.74 | N89°00'00"W | L132 | 62.83  | N49°00'00"W | L221   | 104.29 | N89°00'00"W | L310 | 30.23  | N89°00'00"W |
| L33  | 195.92 | N89°00'00"W | L133 | 68.27  | N57°00'00"W | L222   | 137.48 | N89°00'00"W | L311 | 87.60  | N89°00'00"W |
| L34  | 160.48 | N89°00'00"W | L134 | 53.50  | N89°00'00"W | L223   | 132.39 | N89°00'00"W | L312 | 46.63  | N47°00'00"W |
| L35  | 158.84 | N89°00'00"W | L135 | 61.63  | N89°00'00"W | L224   | 109.35 | N89°00'00"W | L313 | 36.39  | N89°00'00"W |
| L36  | 49.63  | N89°00'00"W | L136 | 43.94  | N59°00'00"W | L225   | 78.10  | N43°00'00"W | L314 | 83.48  | N89°00'00"W |
| L37  | 216.25 | N89°00'00"W | L137 | 50.00  | N59°00'00"W | L226   | 44.46  | N70°00'00"W | L315 | 134.02 | N89°00'00"W |
| L38  | 192.74 | N89°00'00"W | L138 | 33.99  | N14°00'00"W | L227   | 38.19  | N89°00'00"W | L316 | 163.56 | N89°00'00"W |
| L39  | 38.23  | N45°00'00"W | L139 | 87.71  | N89°00'00"W | L228   | 41.85  | N89°00'00"W | L317 | 178.11 | N44°00'00"W |
| L40  | 191.43 | N89°00'00"W | L140 | 74.71  | N54°00'00"W | L229   | 47.65  | N89°00'00"W | L318 | 183.28 | N89°00'00"W |
| L41  | 114.74 | N89°00'00"W | L141 | 62.83  | N49°00'00"W | L230   | 104.29 | N89°00'00"W | L319 | 30.23  | N89°00'00"W |
| L42  | 195.92 | N89°00'00"W | L142 | 68.27  | N57°00'00"W | L231   | 137.48 | N89°00'00"W | L320 | 87.60  | N89°00'00"W |
| L43  | 160.48 | N89°00'00"W | L143 | 53.50  | N89°00'00"W | L232   | 132.39 | N89°00'00"W | L321 | 46.63  | N47°00'00"W |
| L44  | 158.84 | N89°00'00"W | L144 | 61.63  | N89°00'00"W | L233   | 109.35 | N89°00'00"W | L322 | 36.39  | N89°00'00"W |
| L45  | 49.63  | N89°00'00"W | L145 | 43.94  | N59°00'00"W | L234   | 78.10  | N43°00'00"W | L323 | 83.48  | N89°00'00"W |
| L46  | 216.25 | N89°00'00"W | L146 | 50.00  | N59°00'00"W | L235   | 44.46  | N70°00'00"W | L324 | 134.02 | N89°00'00"W |
| L47  | 192.74 | N89°00'00"W | L147 | 33.99  | N14°00'00"W | L236   | 38.19  | N89°00'00"W | L325 | 163.56 | N89°00'00"W |
| L48  | 38.23  | N45°00'00"W | L148 | 87.71  | N89°00'00"W | L237   | 41.85  | N89°00'00"W | L326 | 178.11 | N44°00'00"W |
| L49  | 191.43 | N89°00'00"W | L149 | 74.71  | N54°00'00"W | L238   | 47.65  | N89°00'00"W | L327 | 183.28 | N89°00'00"W |
| L50  | 114.74 | N89°00'00"W | L150 | 62.83  | N49°00'00"W | L239   | 104.29 | N89°00'00"W | L328 | 30.23  | N89°00'00"W |
| L51  | 195.92 | N89°00'00"W | L151 | 68.27  | N57°00'00"W | L240   | 137.48 | N89°00'00"W | L329 | 87.60  | N89°00'00"W |
| L52  | 160.48 | N89°00'00"W | L152 | 53.50  | N89°00'00"W | L241   | 132.39 | N89°00'00"W | L330 | 46.63  | N47°00'00"W |
| L53  | 158.84 | N89°00'00"W | L153 | 61.63  | N89°00'00"W | L242   | 109.35 | N89°00'00"W | L331 | 36.39  | N89°00'00"W |
| L54  | 49.63  | N89°00'00"W | L154 | 43.94  | N59°00'00"W | L243   | 78.10  | N43°00'00"W | L332 | 83.48  | N89°00'00"W |
| L55  | 216.25 | N89°00'00"W | L155 | 50.00  | N59°00'00"W | L244   | 44.46  | N70°00'00"W | L333 | 134.02 | N89°00'00"W |
| L56  | 192.74 | N89°00'00"W | L156 | 33.99  | N14°00'00"W | L245   | 38.19  | N89°00'00"W | L334 | 163.56 | N89°00'00"W |
| L57  | 38.23  | N45°00'00"W | L157 | 87.71  | N89°00'00"W | L246   | 41.85  | N89°00'00"W | L335 | 178.11 | N44°00'00"W |
| L58  | 191.43 | N89°00'00"W | L158 | 74.71  | N54°00'00"W | L247   | 47.65  | N89°00'00"W | L336 | 183.28 | N89°00'00"W |
| L59  | 114.74 | N89°00'00"W | L159 | 62.83  | N49°00'00"W | L248   | 104.29 | N89°00'00"W | L337 | 30.23  | N89°00'00"W |
| L60  | 195.92 | N89°00'00"W | L160 | 68.27  | N57°00'00"W | L249   | 137.48 | N89°00'00"W | L338 | 87.60  | N89°00'00"W |
| L61  | 160.48 | N89°00'00"W | L161 | 53.50  | N89°00'00"W | L250   | 132.39 | N89°00'00"W | L339 | 46.63  | N47°00'00"W |
| L62  | 158.84 | N89°00'00"W | L162 | 61.63  | N89°00'00"W | L251   | 109.35 | N89°00'00"W | L340 | 36.39  | N89°00'00"W |
| L63  | 49.63  | N89°00'00"W | L163 | 43.94  | N59°00'00"W | L252   | 78.10  | N43°00'00"W | L341 | 83.48  | N89°00'00"W |
| L64  | 216.25 | N89°00'00"W | L164 | 50.00  | N59°00'00"W | L253   | 44.46  | N70°00'00"W | L342 | 134.02 | N89°00'00"W |
| L65  | 192.74 | N89°00'00"W | L165 | 33.99  | N14°00'00"W | L254   | 38.19  | N89°00'00"W | L343 | 163.56 | N89°00'00"W |
| L66  | 38.23  | N45°00'00"W | L166 | 87.71  | N89°00'00"W | L255   | 41.85  | N89°00'00"W | L344 | 178.11 | N44°00'00"W |
| L67  | 191.43 | N89°00'00"W | L167 | 74.71  | N54°00'00"W | L256   | 47.65  | N89°00'00"W | L345 | 183.28 | N89°00'00"W |
| L68  | 114.74 | N89°00'00"W | L168 | 62.83  | N49°00'00"W | L257   | 104.29 | N89°00'00"W | L346 | 30.23  | N89°00'00"W |
| L69  | 195.92 | N89°00'00"W | L169 | 68.27  | N57°00'00"W | L258   | 137.48 | N89°00'00"W | L347 | 87.60  | N89°00'00"W |
| L70  | 160.48 | N89°00'00"W | L170 | 53.50  | N89°00'00"W | L259   | 132.39 | N89°00'00"W | L348 | 46.63  | N47°00'00"W |
| L71  | 158.84 | N89°00'00"W | L171 | 61.63  | N89°00'00"W | L260   | 109.35 | N89°00'00"W | L349 | 36.39  | N89°00'00"W |
| L72  | 49.63  | N89°00'00"W | L172 | 43.94  | N59°00'00"W | L261   | 78.10  | N43°00'00"W | L350 | 83.48  | N89°00'00"W |
| L73  | 216.25 | N89°00'00"W | L173 | 50.00  | N59°00'00"W | L262   | 44.46  | N70°00'00"W | L351 | 134.02 | N89°00'00"W |
| L74  | 192.74 | N89°00'00"W | L174 | 33.99  | N14°00'00"W | L263   | 38.19  | N89°00'00"W | L352 | 163.56 | N89°00'00"W |
| L75  | 38.23  | N45°00'00"W | L175 | 87.71  | N89°00'00"W | L264   | 41.85  | N89°00'00"W | L353 | 178.11 | N44°00'00"W |
| L76  | 191.43 | N89°00'00"W | L176 | 74.71  | N54°00'00"W | L265   | 47.65  | N89°00'00"W | L354 | 183.28 | N89°00'00"W |
| L77  | 114.74 | N89°00'00"W | L177 | 62.83  | N49°00'00"W | L266   | 104.29 | N89°00'00"W | L355 | 30.23  | N89°00'00"W |
| L78  | 195.92 | N89°00'00"W | L178 | 68.27  | N57°00'00"W | L267   | 137.48 | N89°00'00"W | L356 | 87.60  | N89°00'00"W |
| L79  | 160.48 | N89°00'00"W | L179 | 53.50  | N89°00'00"W | L268   | 132.39 | N89°00'00"W | L357 | 46.63  | N47°00'00"W |
| L80  | 158.84 | N89°00'00"W | L180 | 61.63  | N89°00'00"W | L269   | 109.35 | N89°00'00"W | L358 | 36.39  | N89°00'00"W |
| L81  | 49.63  | N89°00'00"W | L181 | 43.94  | N59°00'00"W | L270   | 78.10  | N43°00'00"W | L359 | 83.48  | N89°00'00"W |
| L82  | 216.25 | N89°00'00"W | L182 | 50.00  | N59°00'00"W | L271   | 44.46  | N70°00'00"W | L360 | 134.02 | N89°00'00"W |
| L83  | 192.74 | N89°00'00"W | L183 | 33.99  | N14°00'00"W | L272   | 38.19  | N89°00'00"W | L361 | 163.56 | N89°00'00"W |
| L84  | 38.23  | N45°00'00"W | L184 | 87.71  | N89°00'00"W | L273   | 41.85  | N89°00'00"W | L362 | 178.11 | N44°00'00"W |
| L85  | 191.43 | N89°00'00"W | L185 | 74.71  | N54°00'00"W | L274   | 47.65  | N89°00'00"W | L363 | 183.28 | N89°00'00"W |
| L86  | 114.74 | N89°00'00"W | L186 | 62.83  | N49°00'00"W | L275   | 104.29 | N89°00'00"W | L364 | 30.23  | N89°00'00"W |
| L87  | 195.92 | N89°00'00"W | L187 | 68.27  | N57°00'00"W | L276   | 137.48 | N89°00'00"W | L365 | 87.60  | N89°00'00"W |
| L88  | 160.48 | N89°00'00"W | L188 | 53.50  | N89°00'00"W | L277</ |        |             |      |        |             |

# WATERFRONT/WATER VIEW LOTS

## - AVAILABLE SOON -

---

Beautiful Waterfront and Water View  
Lots, all on trailers, perfect for:

- RVs
- Dome homes
- Tiny homes
- Tiny cabins
- Campers
- 5th Wheels
- Pop-ups
- Safari tents
- Yurts
- And more ...
- Lots range in size from .25 acres and up.
- Waterfront lots starting at \$30,000 -  
.25 acres
- Water View lots starting at \$20,000



# CONTACT US TODAY

## INVESTMENTS

**Jamie Mayeaux**

(CEO)

☎ • [\(727\) 496-7673](tel:(727)496-7673)

✉ • [Jamie@CountryGlampingontheriver.com](mailto:Jamie@CountryGlampingontheriver.com)

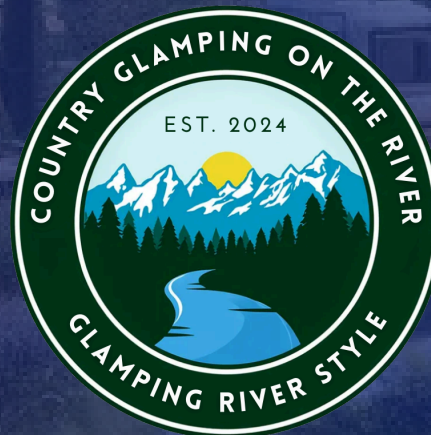
## OPERATIONS

**Chris Mitic**

(COO)

☎ • [502-438-6918](tel:502-438-6918)

✉ • [Chris@CountryGlampingontheRiver.com](mailto:Chris@CountryGlampingontheRiver.com)



[WWW.COUNTRYGLAMPINGONTRIVER.COM](http://WWW.COUNTRYGLAMPINGONTRIVER.COM)

Property Location: Lobelville, TN. One hour SW of Nashville and just 3 miles off of I-40. 📍